

YOUR Council Tax guide

2024/25

INCLUDING POLICE AND FIRE BUDGETS



Open, fair, green

Open your own self-service account today to manage and view your council tax online.
Register at www.n-somerset.gov.uk/myaccount



Contents

- What does your council tax pay for?
 - Where does the money go?
- Open, fair, green
- We will always remember that the money we spend is your money
- For every £100 we receive to fund services we spend
- Help with your bill
 - Council tax support
 - What to do if your circumstances change
 - More help with your bill
- Long-term empty properties
- North Somerset Council's 2024/25 budget
- Places with budgets more than £140,000
- Adult social care precept
- Council tax summary 2024/25
- Council tax bill
- How much will you pay?
- Data Protection



Open your own self-service account today to manage and view your council tax online. Register at www.n-somerset.gov.uk/myaccount

This guide provides information about the budgets for local public services for the year ahead and explains your council tax bill.

For more information call **01934 888 144**

Despite the recognised significant financial pressures we're facing, we remain committed to our vision of an open, fair and green North Somerset, a vision that local people have told us they support.

We will continue to do all we can to support our residents, communities, and local businesses, to keep services running, and ensure those who need help get it.

In common with all councils across the country, we're seeing costs rise at an alarming rate with spiralling inflationary increases, stretched staff resources and an increasing demand for services.

Central government has set a limit on the amount council tax can be increased by at 2.99 per cent. As well as this, again this year we're able to add a further two per cent specifically to fund the increasing costs and demands of adult social care.

North Somerset Council's share of the council tax bill for an average Band D household will be £1,708.50 in 2024/25 – about £142.38 a month. This is £6.76 more a month than last year's average Band D monthly cost of £135.62. This remains the lowest rate of council tax in the West of England area.

Explore council tax and housing benefits digitally

The council tax and benefit service is an online service. You must register and create an account to access these services. Registration is quick, easy and secure and will allow you to apply for benefits, discounts and exemptions. You can also let us know about a change of circumstances or a change of address, set up a direct debit or just view your account balance.

Going digital means we can process many of your requests earlier and provided any additional documents are submitted with your application, you may receive your benefit earlier. For those customers who may have difficulty getting online or have additional needs, support is available. Call **01934 888 144** and one of our customer service advisers will assist you.

Council documents can be made available in large print, audio, easy read and other formats. Documents on our website can also be emailed to you as plain text files. Help is also available for people who require council information in languages other than English.



What does your council tax pay for?

Where does the money go?

North Somerset Council provides a wide range of services including education, planning, transport, highways, social care, public health, libraries, leisure and recreation, recycling and waste collection, environmental health and trading standards among many others.

The money you pay also funds the police and fire and rescue service, as well as supporting work in your local parish or town.

Parish and town councils raise their money primarily from a levy called a precept.

We collect the precept on behalf of town and parish councils and pass it on to them.

The table below shows how the money spent relates to the average council tax bill.

Service	Share of Band D £
Adult Social Services	697.23
Children's Services	285.64
Schools Budgets (entirely Government funded)	0.00
Place	344.87
Corporate Services	266.61
Public Health and Regulatory Services	9.07
Capital Financing and Interest	54.43
Other	50.65
Net North Somerset Requirement	1,708.50

£34.0m
Corporate Services
including registration of births, deaths and marriages, legal, democratic and electoral services, council tax collection and benefits administration



£6.5m
Other
including non-service items and contingency, plus items in your council tax provided by others, for example, magistrates courts, coroners service, Environment Agency and drainage boards

£88.8m
Adult Social Services
including residential care, community meals, services for people with learning difficulties, tackling homelessness and adult education



£6.9m
Capital Financing
infrastructure projects, new buildings and refurbishment, for example, schools and play areas

£1.2m
Public Health and Regulatory Services
including trading standards, scientific services, food & safety, pollution, licensing, and control of dogs

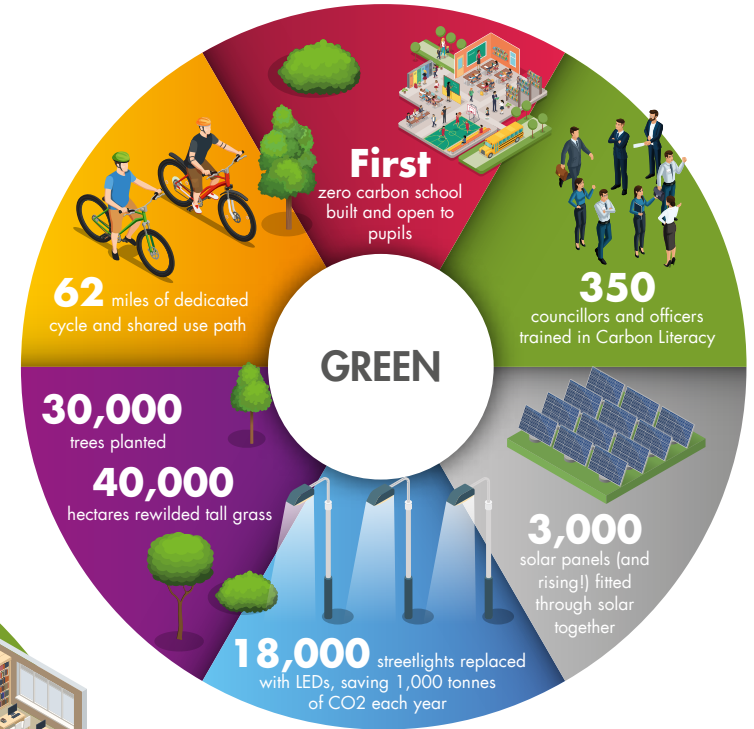
£36.4m
Children's Services
including looking after children at risk, adoption, fostering and care leavers



£43.9m
Place
including maintaining over 680 miles of roads, collecting household waste, recycling, parks, libraries, economic development, public transport and environmental health



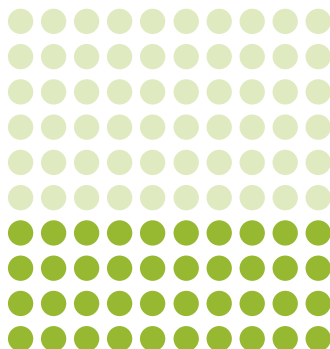

Open, fair, green



We will always remember that the money we spend is your money

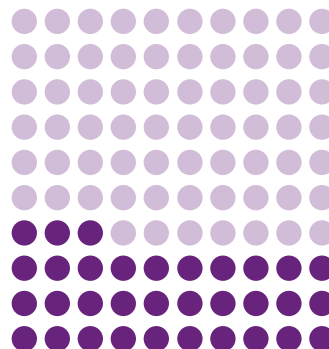
40%

comes from the Government, from the other taxes you pay – most of this can only be used for specific purposes like schools or housing benefit



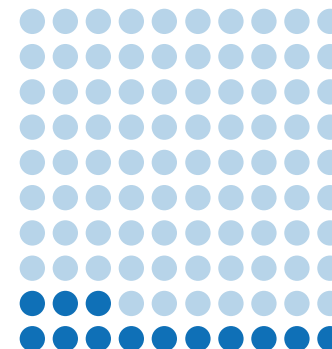
33%

comes from council tax paid by residents



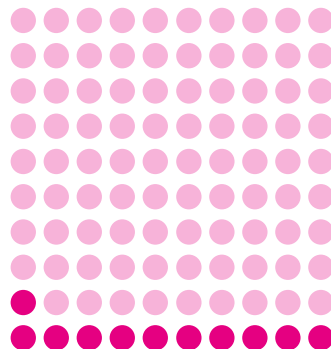
13%

comes from the charges you pay to cover the cost of specific services like planning, licensing, social care, and parking



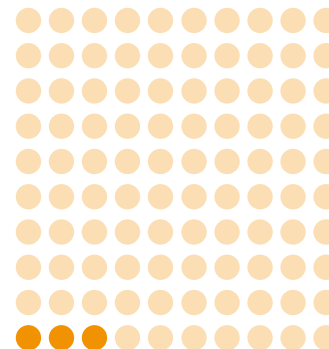
11%

comes from business rates paid by our local business



3%

comes from other sources including investment or rental income



For every £100 we receive to fund services we spend



Help with your bill

Council tax support

If you are on a low income and currently pay council tax, you may be eligible for council tax support even if you receive other benefits or council tax discounts.

Visit our website to register for MyAccount and make your application online. If you are unable to get online or have additional needs call **01934 888 144** and one of our customer service advisers will assist you.

You can also visit any of our libraries and use one of the public access computers to make your application.

If you receive council tax support an amount will be taken off the total council tax you owe for the year and this is shown on the front of your bill.



What to do if your circumstances change

If your circumstances change you must tell us as soon as the changes happen. It is an offence not to tell us about any change in your circumstances that affects your support and could result in a fine of £70 or prosecution. Don't rely on someone else to pass the message on.

Examples of changes in circumstances are:

- you move home
- your rent changes
- any changes to the income or circumstances of anyone who lives with you
- someone moves into or out of your home
- you're going to be away from your home for more than four weeks.

If the change in your income affects your entitlement to council tax support a revised bill will be issued.

You can request a written statement of your entitlement, within one month of the decision being made, by contacting the council. If you want to appeal, this should be in writing within two months of the decision, to the council, who will review the decision. If you remain dissatisfied a further appeal can be made to the Valuation Tribunal.

Details of how you can appeal can be found at www.n-somerset.gov.uk/counciltaxsupport

More help with your bill

Discounts

You can claim a discount if there are less than two adults living in the property. For council tax purposes we will not count the following groups of people when we assess the number of adults who live in the property. .

- People who you receive child benefit for.
- Full-time students, apprentices and people on youth training schemes.
- Husbands, wives/dependants of students not allowed to take a job or claim benefits.
- People under 20 who are still at school or college studying a full-time course of further education.
- People under 20 who have left school between 30 April and 1 November.
- People who are severely mentally impaired and entitled to certain state benefits.
- Patients who live in hospital.
- Patients in nursing homes, residential care homes, hospices and hostels.
- People staying in certain hostels and night shelters who would otherwise have no home at all.

- People in prison or on remand. This includes people held under the Mental Health Act 1983.
- Care workers introduced by an official or charitable body.
- People who care for someone in the property with a disability who is in receipt of certain state benefits.
- Members of religious communities who receive no income.
- People with diplomatic immunity.
- People who are members of a visiting force.
- Members of international headquarters and defence organisations.
- Ukrainian citizens staying in the UK under the government guest scheme.

Other discounts available

- Unoccupied, unfurnished properties which are being or have recently been altered or repaired, maximum of 12 months.
- Foster carers who foster one or more children through North Somerset Council are entitled to 100% council tax discount.

Exempt dwellings

We will not charge council tax on the following:

- Unoccupied charitable properties for up to six months.



- Properties left unoccupied by prisoners.
- Properties left unoccupied by people in hospital, care home, hostel, etc.
- Properties left unoccupied when a person dies until, and up to six months after probate.
- Unoccupied properties whose occupation is prohibited by law.
- Unoccupied properties being held for a minister of religion.
- Properties left empty by people who are receiving residential care.
- Properties left empty by people providing care elsewhere.
- Properties left empty by students.
- Unoccupied properties that have been repossessed.
- Student halls of residence.
- Properties that only students live in.
- Armed forces' barracks, messes, and married quarters.
- Visiting armed forces accommodation.
- Unoccupied properties held by trustees in bankruptcy.
- Empty caravan pitches and boat moorings.
- Properties that are only lived in by people who are under 18.
- Properties that have an empty annex.

- Properties that are lived in by one or more people that are severely mentally impaired.
- Properties where at least one of the liable people is a diplomat.
- Properties with elderly or disabled people living in separate accommodation with families.

If your property falls into one of these categories, then you may qualify for an exemption. Contact us to discuss this further. If you are in any doubt as to your eligibility to a discount or exemption more information and details of how to apply can be found at: www.n-somerset.gov.uk/counciltaxforms

Disabled relief

If anyone in your household needs a devoted room, or an extra bathroom or kitchen, or extra space for wheelchair use indoors, in order to receive care or treatment arising from a substantial and permanent disability, you may be entitled to a reduction off your council tax.

For more information and details of how to apply visit www.n-somerset.gov.uk/counciltaxforms

You can also reduce the amount you pay each month by extending your payments into March.

Long-term empty properties

If you own a property that has been empty for two years or more, you will be charged an extra amount of council tax – a premium.

How much you pay will depend on how long the property has been empty.

- Properties that have been empty for over two years will be charged a premium of 100%.

- Properties that have been empty for over five years will be charged a premium of 200%.
- Properties that have been empty for over ten years will be charged a premium of 300%.
- North Somerset Council offer a free lettings service for landlords. If you are looking for a new tenant then please call **01934 426 483** or email lettingsteam@n-somerset.gov.uk



North Somerset Council's 2024/25 budget

	2023/24	2024/25		
	Net exp £000	Expenditure £000	Income £000	Net exp £000
Adult Social Services	84,334	134,506	- 45,686	88,220
Children's Services	30,012	47,928	- 11,540	36,388
Schools Budgets (entirely Government funded)	0	59,685	- 59,685	0
Place	38,324	81,176	- 37,243	43,933
Corporate Services	31,241	86,461	- 52,497	33,964
Public Health and Regulatory Services	1,374	15,689	- 14,533	1,156
Capital Financing and Interest	10,320	16,726	- 9,792	6,934
Other, including Non Service and Contingency	6,137	6,704	- 1,297	5,407
Gross expenditure	201,742	448,875	- 232,273	216,602
Special Expenses	69	70	-	70
Levy – Environment Agency	305	308	-	308
Special Levy – Drainage Boards	650	667	-	667
North Somerset requirement	202,766	449,920	- 232,273	217,647
Parish Precepts	6,933	7,512	-	7,512
Budget requirement	209,699	457,432	- 232,273	225,159
To be funded by:				
Government Grant – Business Rates grants	- 11,509	-	- 17,870	- 17,870
Government Grant – Social Care grants	- 15,458	-	- 21,581	- 21,581
Government Grant – Other grants	- 5,333	-	- 4,238	- 4,238
Business Rates Income	- 34,473	-	- 34,903	- 34,903
Other – Collection Fund surplus, deficit and reserve transfers	- 4,151	-	100	100
Council tax requirement	138,775	457,432	- 310,765	146,667

Places with budgets more than £140,000

10 councils in North Somerset raise more than £140,000 each through council tax contributions.

Where the money goes	2023/24	2024/25	Where the money goes	2023/24	2024/25
Backwell Parish Council			Nailsea Town Council		
Gross Expenditure	169,730	233,581	Gross Expenditure	677,354	719,770
Less Other Income	- 24,985	- 22,835	Less Other Income	- 109,786	- 124,391
Less Use of Balances/Reserves	0	0	Less Use of Balances/Reserves	0	0
Gives Precept Request	144,745	210,746	Gives Precept Request	567,568	595,379
Clevedon Town Council			Portishead Town Council		
Gross Expenditure	434,680	448,330	Gross Expenditure	1,113,203	1,019,608
Less Other Income	- 20,350	- 17,400	Less Other Income	- 104,132	- 83,572
Less Use of Balances/Reserves	0	0	Less Use of Balances/Reserves	- 142,371	0
Gives Precept Request	414,330	430,930	Gives Precept Request	866,700	936,036
Congresbury Parish Council			Weston-super-Mare Town Council		
Gross Expenditure	181,379	182,725	Gross Expenditure	3,348,628	3,623,442
Less Other Income	- 25,685	- 25,705	Less Other Income	- 412,390	- 487,602
Less Use of Balances/Reserves	- 20,000		Less Use of Balances/Reserves	0	0
Gives Precept Request	135,694	157,020	Gives Precept Request	2,936,238	3,135,840
Hutton Parish Council			Winscombe and Sandford Parish Council		
Gross Expenditure	149,111	163,725	Gross Expenditure	222,120	244,473
Less Other Income	- 8,908	- 9,712	Less Other Income	- 12,585	- 13,322
Less Use of Balances/Reserves	- 13,699		Less Use of Balances/Reserves	- 24,035	- 40,151
Gives Precept Request	126,504	154,013	Gives Precept Request	185,500	191,000
Long Ashton Parish Council			Yatton Parish Council		
Gross Expenditure	239,516	284,415	Gross Expenditure	330,480	337,420
Less Other Income	- 7,477	- 15,227	Less Other Income	- 28,312	- 33,880
Less Use of Balances/Reserves	- 32,164	- 39,000	Less Use of Balances/Reserves	- 44,293	- 17,794
Gives Precept Request	199,875	230,188	Gives Precept Request	257,875	285,746



Adult social care precept

Central government has allowed councils with responsibilities for adult social care to add an additional 2% precept to council tax bills in 2024/25. This money will be ringfenced specifically to contribute to

the council's expenditure on adult social care. This additional precept has been added most years since 2016/17 as a means of helping to meet the rising costs of social care.



Council tax summary 2024/25

The information below shows the amount needed to fund public services in North Somerset – not just those of the council but also the police, fire and rescue service, parish and town councils.

Service	Last year 2023/24 £000	Coming year 2024/25 £000
North Somerset Council needs:		
North Somerset Council (inc. Adult Social Care precept)	201,742	216,602
Special Expenses	69	70
Levy – Environment Agency	305	308
Special Levy – Drainage Boards	650	667
Parish and Town Council precepts	6,933	7,512
North Somerset's Budget requirement	209,699	225,159
less:		
Government Grant – Business Rates grants	- 11,509	- 17,870
Government Grant – Social Care grants	- 15,458	- 21,581
Government Grant – Other grants	- 5,333	- 4,238
Business Rates Income	- 34,473	- 34,903
Other – Collection Fund surplus, deficit and reserve transfers	- 4,151	100
Council Tax Bill		
North Somerset's precept	138,775	146,667
Police & Crime Commissioner of Avon & Somerset precept	21,566	22,741
Avon Fire Authority precept	6,720	6,958
	167,061	176,366

The average Band D council tax for North Somerset 2024/25 will be as follows:

	2023/24 £	2024/25 £
North Somerset Council	1,413.35	1,461.92
Adult Social Care precept	214.03	246.58
Average Parish/Town Council	85.58	92.23
Police and Crime Commissioner of Avon and Somerset	266.20	279.20
Avon Fire Authority	82.95	85.43
	2,062.11	2,165.36



Council tax bill

Council Tax Bill 2024-2025



www.n-somerset.gov.uk/myaccount

Date of issue: 08-MAR-2024

Reference number: 5017887558

Key: F2ZNYSSSGJ

34524 3014650010<29703> S14850 PK1485011 39600 B
148503670657 396B

Mr J Bloggs
1 A Street
A Town
AA1 1AA



12



6335 5530 0800 0501 7887 5587

Find out what your Council Tax helps pay for at: - www.n-somerset.gov.uk/counciltaxguide

Address of property to which the bill relates:

1 A STREET, A TOWN AA1 1AA

My records show that you are the person liable to pay Council Tax for the property shown above.

The valuation band applied to this property is:

Breakdown of charges:	£	%
North Somerset Council	1785.75	3.0
North Somerset Adult Social Care	301.38	2.0
Sub Total – attributable to North Somerset Council	2087.13	
Portishead Special Expenses	3.90	0.0
Avon & Somerset Police and Crime Commissioner	341.24	4.9
Avon Fire Authority	104.41	3.0
Portishead Town Council	109.91	8.2
Gross amount for a band E property	2646.59	5.0

The council tax attributable to North Somerset Council includes a base charge and a precept to fund adult social care. The North Somerset Council base charge has increased by 2.98%. The adult social care precept increase represents 2.00% of the 2023/24 North Somerset Council base charge. The percentages in the table above are rounded to 1 decimal place.

Charge For Period	Band E	01-APR-2024	31-MAR-2025	2646.59
25% Reduction For Single Occupancy		01-APR-2024	31-MAR-2025	-661.65

Council Tax amount payable by you £ 1984.94

First instalment due on 01-APR-2024 1 X 202.94
9 Other instalments due on 01-MAY-2024 to 01-JAN-2025 9 X 198.00
Instalments to be paid by: DIRECT DEBIT (1ST) MONTHLY

Name of liable person /
Billing address

Bar code to be used for making
payment.

Address of property subject to
council tax

This is the breakdown of the
charges and what they are for.
More details are included in this
booklet.

Details of the instalments due.
Details of any balance owing
from previous years will also
be shown here. Please contact
the council if no arrangement
has been made to clear this
balance.

Manage your council tax
account online

The unique reference number
for your account at this
property to be used when
making payment

Reference key to be used with
your reference number to
access your account details
online.
The council tax band which
applies to your property

This is the breakdown of your
annual council tax liability
including any discounts,
exemptions or council tax
support.

Total amount payable for the
current year

Method of payment

14850 1121
02205P 1121



How much will you pay?

Local council	2024/25 precept £	2023/24 precept £	Parish precept amount for Band D £	Band A £	Band B £	Band C £	Band D £	Band E £	Band F £	Band G £	Band H £
Abbots Leigh	31,500.00	31,550.00	74.20	1,430.99	1,669.49	1,907.99	2,146.48	2,623.47	3,100.47	3,577.47	4,292.96
Backwell	210,745.70	144,745.00	103.85	1,450.75	1,692.55	1,934.34	2,176.13	2,659.71	3,143.30	3,626.88	4,352.26
Banwell	133,600.19	122,646.03	85.97	1,438.83	1,678.65	1,918.45	2,158.25	2,637.85	3,117.47	3,597.08	4,316.50
Barrow Gurney	13,600.00	13,500.00	49.98	1,414.84	1,650.65	1,886.46	2,122.26	2,593.87	3,065.48	3,537.10	4,244.52
Blagdon	53,000.00	48,643.00	103.19	1,450.31	1,692.04	1,933.75	2,175.47	2,658.90	3,142.34	3,625.78	4,350.94
Bleadon	67,800.00	64,653.00	122.71	1,463.33	1,707.22	1,951.11	2,194.99	2,682.76	3,170.54	3,658.32	4,389.98
Brockley	5,893.00	5,833.00	40.87	1,408.77	1,643.57	1,878.36	2,113.15	2,582.73	3,052.32	3,521.92	4,226.30
Burrington	8,000.00	6,875.00	30.51	1,401.86	1,635.51	1,869.15	2,102.79	2,570.07	3,037.36	3,504.65	4,205.58
Butcombe	3,784.00	3,600.00	31.14	1,402.28	1,636.00	1,869.71	2,103.42	2,570.84	3,038.27	3,505.70	4,206.84
Churchill	110,565.00	85,565.00	95.74	1,445.35	1,686.24	1,927.13	2,168.02	2,649.80	3,131.58	3,613.37	4,336.04
Clapton-in-Gordano	7,234.00	6,900.00	38.89	1,407.45	1,642.03	1,876.60	2,111.17	2,580.31	3,049.46	3,518.62	4,222.34
Cleeve	17,499.00	16,989.00	46.44	1,412.48	1,647.90	1,883.31	2,118.72	2,589.54	3,060.37	3,531.20	4,237.44
Clevedon	430,930.00	414,330.00	54.89	1,421.18	1,658.06	1,894.92	2,131.78	2,605.50	3,079.24	3,552.96	4,263.56
Congresbury	157,020.00	135,694.44	102.80	1,450.05	1,691.74	1,933.41	2,175.08	2,658.42	3,141.78	3,625.13	4,350.16
Dundry	13,740.00	13,091.00	35.62	1,405.27	1,639.48	1,873.69	2,107.90	2,576.32	3,044.74	3,513.17	4,215.80
Flax Bourton	27,000.00	26,500.00	73.67	1,430.63	1,669.08	1,907.51	2,145.95	2,622.82	3,099.70	3,576.58	4,291.90
Hutton	154,013.00	126,504.00	130.19	1,468.31	1,713.04	1,957.75	2,202.47	2,691.90	3,181.34	3,670.78	4,404.94
Kenn	9,000.00	8,000.00	45.36	1,411.76	1,647.06	1,882.35	2,117.64	2,588.22	3,058.81	3,529.40	4,235.28
Kewstoke	54,000.00	50,000.00	78.11	1,433.59	1,672.53	1,911.46	2,150.39	2,628.25	3,106.12	3,583.98	4,300.78
Kingston Seymour	12,240.00	11,750.00	66.06	1,425.56	1,663.16	1,900.75	2,138.34	2,613.52	3,088.71	3,563.90	4,276.68
Locking	134,500.00	124,250.00	94.81	1,444.73	1,685.52	1,926.31	2,167.09	2,648.66	3,130.24	3,611.82	4,334.18
Long Ashton	230,188.00	199,875.00	82.15	1,436.29	1,675.67	1,915.05	2,154.43	2,633.19	3,111.95	3,590.72	4,308.86
Loxton and Christon	7,000.00	5,500.00	70.21	1,428.33	1,666.39	1,904.44	2,142.49	2,618.59	3,094.70	3,570.82	4,284.98
Nailsea	595,379.00	567,568.00	93.67	1,443.97	1,684.63	1,925.29	2,165.95	2,647.27	3,128.59	3,609.92	4,331.90
Pill and Easton-in-Gordano	117,036.00	114,400.00	66.17	1,425.63	1,663.25	1,900.85	2,138.45	2,613.65	3,088.87	3,564.08	4,276.90
Portbury	33,045.00	31,380.00	74.04	1,430.88	1,669.37	1,907.84	2,146.32	2,623.27	3,100.24	3,577.20	4,292.64
Portishead	936,036.00	866,700.00	89.93	1,443.60	1,684.21	1,924.81	2,165.40	2,646.59	3,127.80	3,609.00	4,330.80
Puxton	10,871.00	10,082.00	72.57	1,429.90	1,668.22	1,906.54	2,144.85	2,621.48	3,098.11	3,574.75	4,289.70
St. Georges	29,400.00	28,100.00	25.92	1,398.80	1,631.94	1,865.07	2,098.20	2,564.46	3,030.73	3,497.00	4,196.40
Tickenham	15,808.00	12,160.00	29.48	1,401.17	1,634.71	1,868.23	2,101.76	2,568.81	3,035.87	3,502.93	4,203.52
Walton-in-Gordano	7,542.00	6,321.00	55.01	1,418.19	1,654.57	1,890.93	2,127.29	2,600.01	3,072.75	3,545.48	4,254.58
Weston-in-Gordano	20,500.00	20,000.00	141.09	1,475.58	1,721.52	1,967.44	2,213.37	2,705.22	3,197.09	3,688.95	4,426.74
Weston-super-Mare	3,135,840.00	2,936,238.00	117.58	1,459.91	1,703.23	1,946.55	2,189.86	2,676.49	3,163.13	3,649.77	4,379.72
Wick St. Lawrence	23,000.00	21,500.00	41.00	1,408.85	1,643.67	1,878.47	2,113.28	2,582.89	3,052.51	3,522.13	4,226.56
Winford	32,000.00	29,500.00	31.74	1,402.68	1,636.47	1,870.24	2,104.02	2,571.57	3,039.14	3,506.70	4,208.04
Winscombe and Sandford	191,000.00	185,500.00	85.42	1,438.47	1,678.22	1,917.96	2,157.70	2,637.18	3,116.67	3,596.17	4,315.40
Wraxall and Failand	53,609.00	51,057.00	45.44	1,411.81	1,647.12	1,882.42	2,117.72	2,588.32	3,058.93	3,529.53	4,235.44
Wroughton	131,976.00	127,500.00	103.76	1,450.69	1,692.48	1,934.26	2,176.04	2,659.60	3,143.17	3,626.73	4,352.08
Yatton	285,746.00	257,875.00	91.03	1,442.21	1,682.58	1,922.95	2,163.31	2,644.04	3,124.78	3,605.52	4,326.62



Data Protection

North Somerset Council is registered with the Information Commissioner's Office for the purposes of processing personal data. The council tax service is administrated on behalf of North Somerset Council by our partner Liberata UK Ltd, 5th Floor, Knollys House, 17 Addiscombe Road, Croydon CR0 6SR. Commissioned third-party companies may be contracted to deliver services related to the collection of council tax, and as such they will process personal data on our behalf and only under our instruction. Examples would be enforcement agents who we ask to recover outstanding monies on our behalf. You will be notified if your account is passed over to an enforcement agent.

The processing of your personal data within the council tax service is necessary to fulfil our statutory obligations under the Local Government Finance Act 1992, in accordance with Articles 6(1)(e), 9(2)(g), and 10 of the UK GDPR. The information we process is your name, contact details, financial information, National Insurance number and date of birth. This information is necessary to ensure we are applying the correct council tax charges to your property. In addition to this, we may also capture employment details, if we consider it necessary to apply an Attachment to Earnings as means to

recover any outstanding monies, and we may also capture information about health conditions, disabilities, sexual preferences, immigration status and prison sentences, where these may deem you eligible for a discount on your council tax. The information will form part of your council tax account and held for six years after the closure and final action on that account.

We may also share personal data with Government and Public Sector partners for statutory purposes which are compatible with our own. In particular this includes: HMCTS (The Courts and Tribunals Service), DWP (the Department for Work and Pensions), the DVLA, the passport office, HMRC (Revenue and Customs), and the Valuation Office Agency. Your data may also be shared internally with our "Empty Properties Officer" to be used for prevention or enforcement actions related to empty properties, prevention of Council Tax fraud, and for the purposes of meeting the council's housing delivery responsibilities.

Where a customer is eligible for Council Tax Support, we will share this information with South West Water Limited and Wessex Water Services Limited, as this also entitles customers to discounts on their water bills. This includes sharing if a

customer is no longer entitled to Council Tax Support. You may object to the sharing of your data in this manner, by contacting the council's Data Protection Officer.

The personal data described in this notice may also be shared internally for the purposes of the delivery of the council's statutory services where legally permissible. In addition, we may also disclose information to a third party where we are satisfied that the party has both a legitimate interest in the information and that it would be fair to do so, in accordance with UK and European data protection law. We do not share the information with other organisations for commercial purposes.

If you have any questions or concerns about the way we process your personal data, our Data Protection Officer can be contacted at DPO@n-somerset.gov.uk.



LOCAL POLICE TAX 2024 HOW WILL WE SPEND IT?

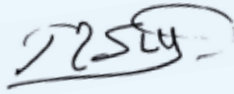


As your elected Police and Crime Commissioner (PCC), I am responsible for setting the amount of money you contribute to local policing through the council tax.

As PCC, I must balance the challenges faced within policing with your views on how much extra you are willing to pay, in order to best resource an efficient and effective service to keep people safe.

The increase you pay in your council tax bill from April will help Avon and Somerset Police to deliver my Police & Crime Plan and will mean any savings that need to be made in future will have less of an impact on frontline services."

Mark Shelford



LOCAL POLICE TAX 2024 HOW WILL WE SPEND IT?

POLICE AND CRIME PLAN PRIORITIES



Preventing and fighting crime



Engaging, supporting and working with communities, victims and partner organisations

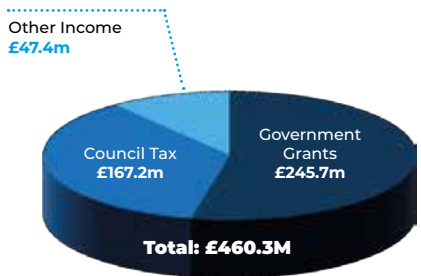


Leading the police to be efficient and effective

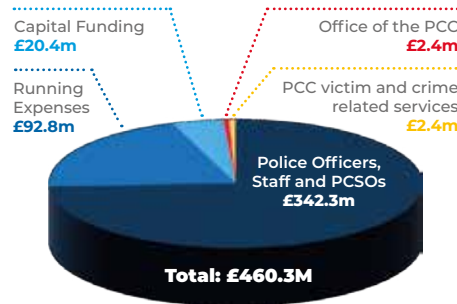


Increasing the legitimacy of, and public confidence in, the police and criminal justice system

WHERE DOES THE MONEY COME FROM?



WHERE DOES THE MONEY GO?



Council Tax Band	Monthly Increase to Your Bill	Yearly	Council Tax Band	Monthly Increase to Your Bill	Yearly
A	0.73	8.67	E	1.33	15.89
B	0.85	10.11	F	1.56	18.78
C	0.97	11.56	G	1.80	21.67
D	1.08	13.00	H	2.16	26.00

TAKE OUR SURVEY AND TELL US YOUR POLICING PRIORITIES:

<http://tinyurl.com/policingpriorities>

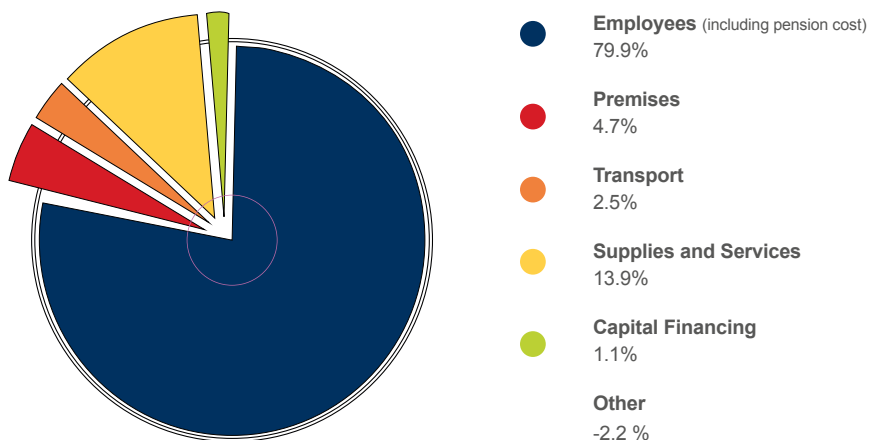
Your fire and rescue service

Avon Fire & Rescue Service (AF&RS) protects the communities of Bath & North East Somerset, Bristol, North Somerset and South Gloucestershire.

For 2024/25, this service will cost Band D council tax payers £85.43 which is an increase of 2.99%.

We continue to provide this vital service to keep you and your family safe, 24 hours a day, seven days a week, 365 days a year at cost of around 10p a day for each of the 1.1 million people who live in our area.

Where does each pound go?



£ Annual budget

Avon Fire Authority has set its net budget for 2024/25 at £51.963 million. This represents a Council Tax level of £85.43 a year for a Band D property, an increase of 2.99%.

The Government's funding assessment for Avon Fire Authority has been increased by £3.335m (19.4%) to £20.489m for 2024/25, however this includes the previous pension grant of £2.407 million so in real terms the increase is £0.928 million (5.4%). The impact of this is that the funding provided by Central Government is increased by £2.799m (23.2%) to £14.835m, excluding the pension grant £0.392 million (3.2%).

Spending plans

	2023/24 (£m)	2024/25 (£m)
Total fire expenditure	56.222	61.534
Income	-7.182	-8.899
Net budget before use of reserves	49.040	52.635
Use of reserves	-0.600	-0.672
Net budget	48.440	51.963
Funding:		
Central Government		
Revenue Support Grant	5.839	8.637
Business rate – Top-up	6.197	6.198
Local funding		
Locally retained business rates	4.802	4.684
Council tax	31.602	32.444
Total	48.440	51.963

The main changes in spending from 2022/23 to 2023/24 are shown below.

Main changes in net expenditure	(£m)
2023/24 Budget	48.440
Pay and non-pay inflation	2.535
Other spending pressures	1.655
Transformation and change savings	-0.667
2023/24 Budget	51.963

For more information visit www.avonfire.gov.uk    @AvonFireRescue

Avon Fire & Rescue Service, Police & Fire Headquarters, PO Box 37, Valley Road, Bristol, BS20 8JJ

0117 926 2061

Sign-up to our monthly digital digest for the latest news and events delivered straight to your inbox.

www.northsomersetlife.co.uk



We
urgently
need more foster
families to ensure our
children can stay in the
community they trust.

Make a difference,
Be the difference

time to care...

Fostering
North Somerset



To receive an information pack or attend one of our regular information sessions, call us or fill in our online enquiry form.

01275 888 999

www.n-somerset.gov.uk/fostering