

### No Will: Your Family Could Lose Thousands in Inheritance!

Legacy Wills & Estate Planning | Sponsored Links by Taboola

### No Magic Solutions: These Shoes Help You Shed Weight Quickly and Naturally

Foot Insider | Sponsored Links by Taboola

[Learn More](#)

### Health Secret Revealed: Why Orthopaedists Love It

Healthtrend | Sponsored Links by Taboola

[Learn More](#)

## Thousands of new homes for Somerset mapped and full location list

Here are all the sites listed for possible development

SHARE

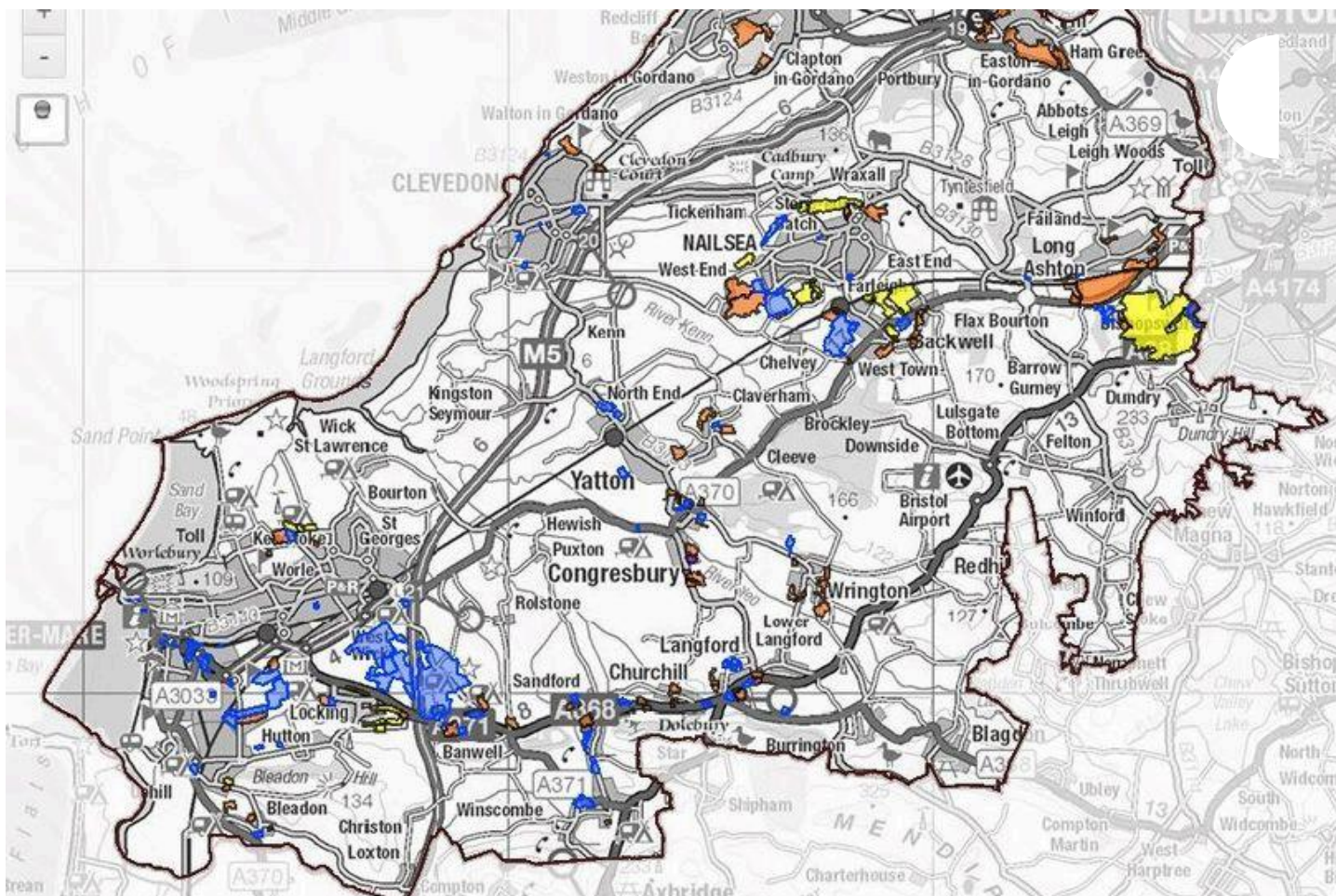
1

By [Daniel Clark](#) Content Editor 05:55, 1 MAR 2025

Bookmark

▶ See news near you

In YourArea

Housing plans for North Somerset

Get the latest Somerset Live breaking news on WhatsApp

Privacy

put out for public consultation follow the local authority being told by the government it needs to build a mandatory 23,895 new homes by 2040.

This is 8,620 more homes than North Somerset had previously been told it needed to find space for in its local plan. Now, as a result of the increase in housing targets, the council is once again needing to find land for the developments.

Sponsored by Taboola

### If You Need To Kill Time On Your Computer, This Popular Strategy Game Is A Must.

Forge Of Empires

Play Now

## SIMILAR ARTICLES TO THIS

POWERED BY mantis



Major changes to bus routes across Somerset listed in full

Physiotherapist: "This Is The Worst Enemy of Arthritis"

Nutritional Sciences Ltd



Council 'failing in its duty' over Bridgwater roadworks, says MP



The stunning car-free route li Somerset coastal communiti

Sponsored Links by Taboola

North Somerset Council is preparing a new local plan with a 15 year plan period 2025-2040. Once adopted it will replace the current development plan which currently has an end date of 2026

READ MORE: [South West major cliff fall sparks urgent warning](#)

READ MORE: [Boy, 4, dies day after telling mum 'under my arm hurts' following family holiday](#)

A consultation proposing where new homes could go will run until Friday March 21. Major new housing locations could include the new village of Wolverhill – already included in a previous iteration of the Local Plan – as well as more development in Backwell; expanding [Nailsea](#) to the north, south, and especially west; building about 1,000 more homes in Pill; and 400 homes on [Portishead](#) Down.

But the most controversial proposal is likely to be the area directly south of Long Ashton which could be allocated for 7,000 homes, under what the council has called a plan for “south west Bristol.”

The village, which is fiercely proud of its position as a village near but not connected to Bristol, has [just lost a battle against plans for an American healthcare technology company to build their European headquarters](#) in a large campus on a triangle of land between the Long Ashton Bypass and South Bristol Link Road. 4,000 homes are under the South West Bristol plan, while another 3,009 could be built in Long Ashton.

You can [comment on the consultation here](#). More information about the plans [can also be found here](#).

Below are all the sites listed in the consultation document as preferred options as to where development could take place.



		2024)	as 'most suitable'	as 'other potential'.
Strategic growth location: Weston	Weston-super-Mare	6,228	674	907
	Wolvershill	2,800	500	0
Strategic growth location: Nailsea and Backwell	Nailsea	802	1193	1208
	Backwell	669	1114	643
Strategic growth location: SW Bristol	SW Bristol	215	4,000	230
Towns	Clevedon	272	-	90
	Portishead	505	-	686
Large villages	Banwell	81	-	313
	Bleadon	42	-	137
	Churchill/Langford	284	-	597
	Congresbury	118	-	887
	Long Ashton	24	-	3009
	Pill/Easton-in-Gordano	0	-	1100
	Sandford	84	-	312
	Winscombe	236	-	120
	Wroughton	0	-	411
	Yatton/Claverham	204	-	340
Elsewhere	Rural areas	107	-	0
Windfall	District wide	2,604	-	-
<b>Total</b>		<b>15,275</b>	<b>22,756</b>	<b>10,990</b>

### WESTON-SUPER-MARE

Weston-super-Mare is the principal settlement in North Somerset and where it would be expected that most growth should be directed. However, the town is highly constrained particularly by areas at risk of flooding. A new strategic growth location at Wolvershill (north of Banwell) is already included. The broad location includes well-related villages such as Uphill, Hutton and Locking which have a close relationship to the town.



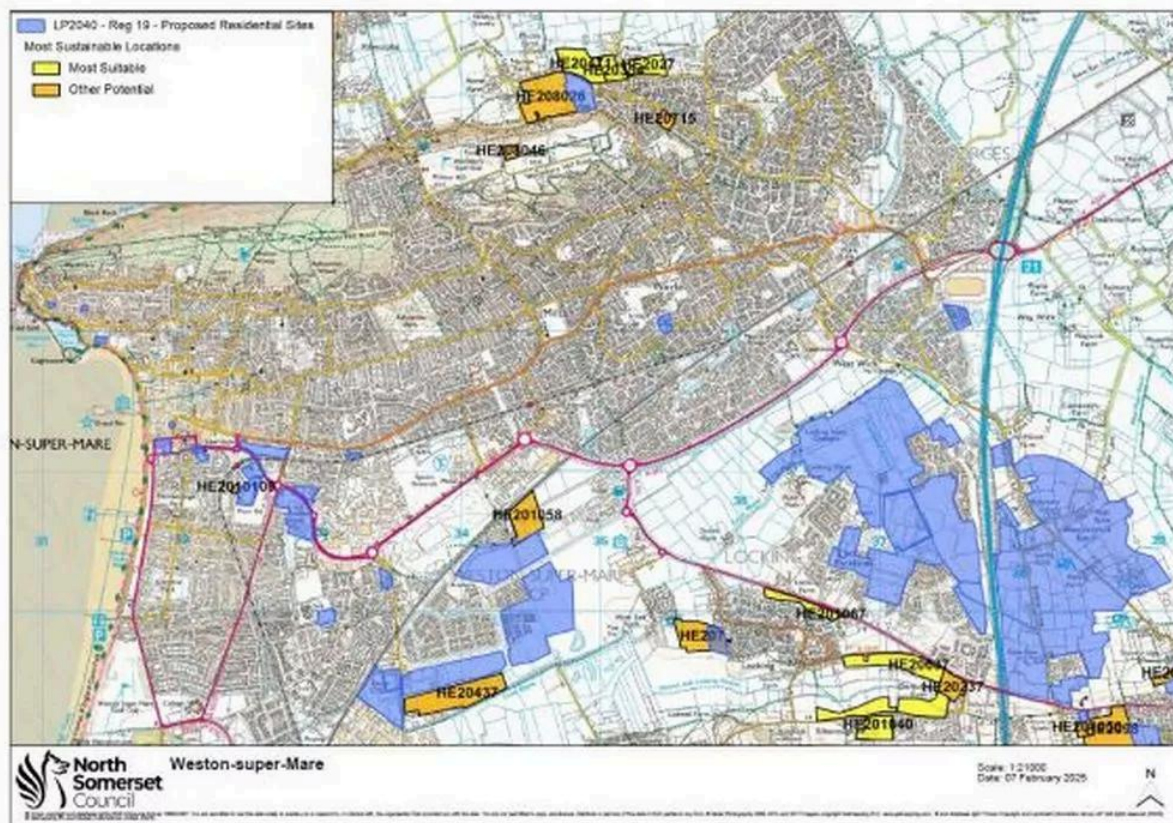
### Dr Sarah Brewer: Take 1 Cup Before Bed, Watch Your Body Thin Down

Comfy Men Shoes

#### This is a pair of shoes that every man must have in 2024

by Taboola

- North of Locking – 15 homes
- Land to the west of Elborough – 70 homes



### SOUTH WEST BRISTOL

This broad location comprises one of the most sensitive parts of the North Somerset Green Belt, although its location adjacent to the edge of Bristol also makes it potentially a very sustainable location in relation to accessibility to services, facilities and jobs in the Bristol urban area. The plan identifies one very large strategic location which straddles the A38 and two smaller parcels to the west.

The graphics are so good that you can play for hours.

Raid Shadow Legends | Sponsored Links by Taboola

Try Now

The Most Powerful At-Home Method for Nail Fungus

PODclear | Sponsored Links by Taboola

Learn More

- The Vale (Woodspring Golf Course and land to south east of 38) – 4000 homes

### SIMILAR ARTICLES TO THIS

POWERED BY mantis



# Reach





- Land at Barrow Wood – 85 homes
- Land at Barrow Wood – 145 homes

#### **NAILSEA AND BACKWELL**

The town of Nailsea taken together with the adjacent village of Backwell have been identified as a potential strategic growth location given the range of services, facilities and jobs and excellent public transport opportunities provided by the rail station and A370. Nailsea and Backwell lie on the outer edge of the Green Belt with sites to the north and east generally within the designation but not to the south and west.

- Land north of Nailsea – 381 homes
- Land off Pound Lane, Nailsea – 100 homes
- Poplar Farm, Nailsea – 130 homes
- Youngwood Farm, Nailsea – 120 homes
- North and south of Youngwood Lane, Nailsea – 316 homes
- Land at Youngwood Lane, Nailsea – 66 homes
- Land near the Perrings, Nailsea – 80 homes
- Land near Wooleys Farm, Backwell – 14 homes
- Land east of Backwell A – 500 homes
- Land east of Backwell B – 450 homes
- Land off Farleigh Road, Backwell – 25 homes
- Western part of Farleigh Fields, Backwell – 125 homes

#### **CLEVEDON**

- Land off Castle Road – 70 homes
- North of Nortons Wood Lane – 20 homes

#### **PORTISHEAD**

- Downside – 24 homes
- Black Rock, North of Clevedon Road – 100 homes
- West of Weston Wood Road – 27 homes
- South of Cedar Way -135 homes
- Land at Tower Farm – 400 homes

#### **BANWELL**

- East of Riverside – 30 homes
- Elmcroft Farm – 100 homes
- Land north of Banwell – 58 homes
- South of Knightcott Road – 95 homes
- Western trade Centre – 30 homes

#### **BLEADON**

- Purn House Farm Industrial Estate – 60 homes
- Land north of Amesbury Drive – 45 homes



- Land west of Ladymead Lane – 60 homes
- West of Ladymead Lane – 100 homes
- Bath Road – 18 homes
- Land south of A38 – 165 homes
- Land to southeast of Langford – 78 homes
- Land to west of Wyndhurst Road – 89 homes
- Hilliers Lane – 27 homes

#### **CONGRESBURY**

- Land adjacent to B3133 – 60 homes
- North of Greenholm Nurseries – 54 homes
- Land at Woodhill – 100 homes
- Allotments near Woodhill Nurseries – 43 homes
- Land north of Congresbury – 68 homes
- Land at Cobthorn Farm – 45 homes
- Park Farm – 90 homes
- Land southeast of Congresbury – 15 homes
- East of Brinsea Road – A – 255 homes
- East of Brinsea Road – B – 43 homes
- East of Brinsea Road – C – 90 homes
- Land east of Brinsea Road – 24 homes

#### **LONG ASHTON**

- Weston Road – 40 homes
- Land south of Parsonage Road – 219 homes
- Land south of Parsonage Road – 50 homes
- Land around Yanley Lane, South Long Ashton – 280 homes
- Land south of Long Ashton – 2000 homes
- Wildcountry Lane – 114 homes
- Land west of Wildcountry Lane – 174 homes
- Land south of Weston Road – 20 homes
- Land north of Short Lane, Long Ashton – 97 homes
- Land off Clerken Coombe – 15 homes



LOADING

 **Where new housing could be built south of Long Ashton** (Image: North Somerset Council)

#### **PILL/EASTON-IN-GORDANO**

- Land at Lodway Farm – 160 homes
- Land east of Gordano Services – 200 homes
- Pill Green – 600 homes
- Land at Pill Road – 100 homes
- Land at Ham Green – 40 homes

#### **SANDFORD**

- Land south of Roman Road, Sandford – 160 homes
- South of Roman Road – 20 homes
- Land at Mead Lane – 30 homes
- Land west of Sandford – 18 homes
- Land east of Sandford – 12 homes
- Land north of Greenhill Road – 37 homes
- Land south of Greenhill Road – 35 homes

#### **WINSCOMBE**

- Hill Road – 80 homes
- Fullers Lane – 40 homes

#### **WRINGTON**

- Land east of Wrington – 180 homes
- Land at Cox's Green – 70 homes
- Land west of Garston's Orchard – 63 homes
- West of Butts Batch – 48 homes
- The Alburys – 50 homes

### SIMILAR ARTICLES TO THIS

POWERED BY mantis



South West city has been turned 'into a prison' say fuming locals

## Reach Advertisement



South West 'Ghost town' fears over new M5 shopping centre



Inside 'dire' town with chester grater chairs which has seen days

Nail Fungus Hates This Trick (New Method from the USA!)

PODOclear

[Learn More](#)

Sponsored Links by Taboola

Search for the Slots Online - Hit the Jackpot Today!  
Sponsored Links by Taboola

## Reach Advertisement

COMMENTS

Compare travel insurance

## Reach Advertisement

· Meeting House Lane North, Claverham/Cleeve – 120 homes

As the new housing target is 23,895 dwellings, the current shortfall is a minimum of 8,620 dwellings. If the 7,481 dwellings at the strategic growth locations identified as 'most suitable' are added, the shortfall is reduced to 1,139 dwellings.

Across the 'other potential' site locations the overall capacity totals 10,990 dwellings indicating sufficient opportunity to provide options to meet the residual shortfall.

## Somerset Live WhatsApp Breaking News and Top Stories

LOADING

Join Somerset Live's WhatsApp community for top stories and breaking news sent directly to your phone

[Somerset Live](#) is now on WhatsApp and we want you to join our community.

Privacy In the app, we'll send the latest breaking news, top stories, exclusives and much more straight to your phone.





**READ NEXT:**

- [South West major cliff fall sparks urgent warning](#)
- [Boy, 4, dies day after telling mum 'under my arm hurts' following family holiday](#)
- [Princess Andre shows off 'insane' new hair transformation after ditching signature look](#)
- [Somerset's best pubs and bars according to Tripadvisor traveller reviews](#)
- [Controversial Bath LTN could end up being reversed](#)

Follow SomersetLive

Facebook

X (Twitter)

Comment

## New Retirement Village in Weston-Super-Mare (Take a Look at the Prices)

Retirement Villages | Sponsored

## Cardiologist Begg Brits To Throw Out This 1 Food Immediately

Blood Sugar Findings | Sponsored

## Cardiologist: Eat Chocolate Before Bed and Watch What Happens

Full Nutrition Secrets | Sponsored



**MORE ON**

[North Somerset Council](#) [Bath](#) [Weston-Super-Mare](#) [Politics](#)

ADVERTISEMENT

### Search Slots Online Today - Your Winning Streak Starts Here!

Slots | Yahoo Search

[Play Now](#)

### Struggling with Nerve Pain? These Shoes Could be the Answer

Foot Insider

[Learn More](#)

Sponsored Links by Taboola

ADVERTISEMENT

### Unbelievable: Calculator Shows The Value Of Your Car Instantly (Take a Look)

Instant Car Value Calculator

[Learn More](#)

### Unbelievable: Calculator Shows The Value Of Your House Instantly (Take a Look)

Home Value Calculator

[Search Now](#)

Sponsored Links by Taboola

ADVERTISEMENT

### Own A Barrel of Whisky With Average Annual Returns of 10.15%\*

Whisky Investors

[ownload](#)

### Unsold Garden Rooms Are Selling For Almost Nothing - Click to See

Garden Rooms For Almost Nothing

[arn More](#)

Sponsored Links by Taboola

ADVERTISEMENT

### Many Seniors Unaware of Travel Insurance That Doesn't Look At Medical Conditions!

Seniors Travel Insurance

[Learn More](#)

### Simple Natural Spray Relieves Tinnitus

Stop Tinnitus

[Learn More](#)

Sponsored Links by Taboola

[NEWS](#) [ALL](#)

## TOP STORIES >

**Glastonbury 2025: Rising star confirms she's set to play festival after 'wild' year**



**MINEHEAD**

**South West city has been turned 'into a prison' say fuming locals**

**POLITICS**

**Pop-up restaurant bringing people together with pay-what-you-can meals**

**FROME**

**Somerset Funeral Notices as tributes left for 33 loved ones**

**PEOPLE**



FRONTPAGE

**Jeremy Clarkson's farm shop reopens as fans flock and queue for hours**

CELEBS/TV

**Stunning new artwork at Bath Spa station**

BATH

**Teenage karate champ to represent GB on the world stage**

DORSET





WILTSHIRE

**Major changes to bus routes across Somerset listed in full**

BATH

**UK snow maps show which regions will be battered in icy blast**

UK & WORLD NEWS



NEWS

SPORT

WHAT'S ON

---

FOLLOW US



